

WHIRLWIND

FOR CONCERT BAND

A Soundscape
Free time. Play on cue.

Waterglass chime
let ring

B Solo with whirlies

Like a whirlwind: slowly — getting faster — then slowly again

mp smooth and gentle

C Soundscape
Play melody on cue and hold last note

mf clingingly

D Andante con moto (♩ = 96)

E Two-part round

mf

F Percussion solo
4 12

G Four-part round

f

mf mp

H Solo with echo
Like a whirlwind

I Soundscape
Free time. Play on cue. Waterglass chime
let ring

91 2 93 94

WHIRLWIND

FOR CONCERT BAND

A Soundscape
Free time. Play on cue.
Home-made rattle

B Solo with whirlies
Like a whirlwind: slowly — getting faster — then slowly again

Musical notation for sections A and B. Section A is a free-time soundscape with a 'Home-made rattle' effect. Section B is a solo with whirlies, starting at measure 2, marked *mp* smooth and gentle. The notation includes a treble clef, a key signature of one flat, and a 3/4 time signature. It features a series of eighth notes with a crescendo and decrescendo hairpin.

C Soundscape
Play melody on cue and hold last note

Musical notation for section C, starting at measure 2. It features a melody with a crescendo and decrescendo hairpin, marked *mf* clingly. The notation includes a treble clef, a key signature of one flat, and a 3/4 time signature.

D
4 Andante con moto (♩ = 96)

E Two-part round

Musical notation for sections D and E. Section D is marked 'Andante con moto (♩ = 96)' and includes a 18-measure rest for Group 1. Section E is a two-part round starting at measure 18, marked *mf*. The notation includes a treble clef, a key signature of one flat, and a 3/4 time signature.

Musical notation for the continuation of section E, starting at measure 27. It features a melody with a crescendo and decrescendo hairpin.

F Percussion solo

Musical notation for section F, starting at measure 36. It includes a 4-measure rest followed by a 12-measure rest. The notation includes a treble clef, a key signature of one flat, and a 3/4 time signature.

G Four-part round

Musical notation for section G, starting at measure 56. It is marked *f* and includes a 4-measure rest for Group 1. The notation includes a treble clef, a key signature of one flat, and a 3/4 time signature.

Musical notation for the continuation of section G, starting at measure 65. It features a melody with a crescendo and decrescendo hairpin.

Musical notation for the continuation of section G, starting at measure 74. It features a melody with a crescendo and decrescendo hairpin, marked *mf* and *mp*.

Musical notation for the continuation of section G, starting at measure 82. It features a melody with a crescendo and decrescendo hairpin.

H Solo with echo
Like a whirlwind

I Soundscape
Free time. Play on cue. Home-made rattle

Musical notation for sections H and I. Section H is a solo with echo starting at measure 91, marked 'Like a whirlwind'. Section I is a soundscape starting at measure 93, marked 'Free time. Play on cue. Home-made rattle'. The notation includes a treble clef, a key signature of one flat, and a 3/4 time signature.

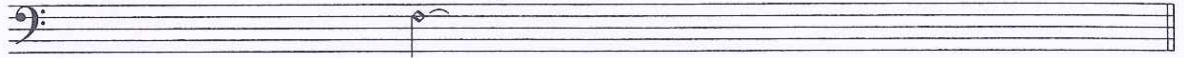
WHIRLWIND

FOR CONCERT BAND

A Soundscape

Free time.
Play on cue.

Waterglass chime
let ring



B Solo with whirlies

Like a whirlwind: slowly — getting faster — then slowly again



C Soundscape

Play melody on cue and hold last note

D

Andante con moto (♩ = 96) 18



E Two-part round

20

F Percussion solo

12

G Four-part round

Group 2

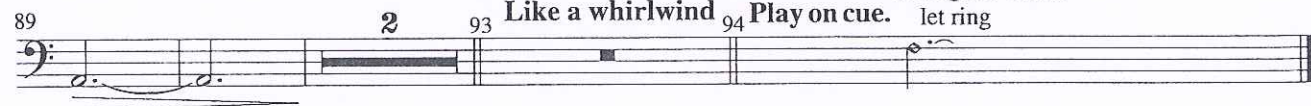


H Solo with echo

Like a whirlwind

I Soundscape

Free time. Waterglass chime
Play on cue. let ring



WHIRLWIND

FOR CONCERT BAND

A Soundscape

Free time. Play on cue.

Waterglass chime
let ring

B Solo with whirlies

Like a whirlwind: slowly — getting faster — then slowly again

(2)

C Soundscape

Play melody on cue and hold last note

D

Andante con moto (♩ = 96) 18

E Two-part round
20

F Percussion solo
12

G Four-part round
Group 2

Solo Clar.: do not play this tied note,
prepare for solo

H Solo with echo

Like a whirlwind: slowly — getting faster — then slowly again

I Soundscape

Free time. Play on cue.

Waterglass chime
let ring

WHIRLWIND

FOR CONCERT BAND

JODIE BLACKSHAW

A Soundscape
Free time. Play on cue.
Home-made rattle

B Solo with whirlies
Like a whirlwind: slowly — getting faster — then slowly again

Musical notation for sections A and B. Section A is a treble clef staff with a key signature of two sharps (F# and C#) and a common time signature. It begins with a 'Home-made rattle' indicated by a wavy line. Section B starts at measure 2 and features a melodic line with a dynamic marking of *mp* and the instruction 'smooth and gentle'. The tempo is marked as 'Andante con moto'.

Musical notation for section 2, starting at measure 2. It continues the melodic line from section B with a dynamic marking of *mp*.

C Soundscape
Play melody on cue and hold last note

D Andante con moto (♩ = 96) 18

Musical notation for sections C and D. Section C starts at measure 3 with a dynamic marking of *mf* and the instruction 'clingingly'. Section D begins at measure 18 with a 3/4 time signature and a tempo marking of 'Andante con moto (♩ = 96)'. The section ends with a double bar line.

E Two-part round 20

F Percussion solo 12

G Four-part round 3

Musical notation for sections E, F, and G. Section E is a two-part round starting at measure 24. Section F is a percussion solo starting at measure 32. Section G is a four-part round starting at measure 44. All sections end with double bar lines.

Musical notation for section 59, starting at measure 59. It is marked 'Group 4' and *f*. The notation shows a melodic line with a dynamic marking of *f*.

Musical notation for section 65, starting at measure 65. It continues the melodic line with a dynamic marking of *f*.

Musical notation for section 71, starting at measure 71. It continues the melodic line with a dynamic marking of *f*.

Musical notation for section 79, starting at measure 79. It continues the melodic line with a dynamic marking of *mf* and *mp*.

Musical notation for section 85, starting at measure 85. It continues the melodic line with a dynamic marking of *mp*.

H Solo with echo
Like a whirlwind

I Soundscape
Free time. Play on cue. Home-made rattle

Musical notation for sections H and I. Section H is a solo with echo starting at measure 91. Section I is a soundscape starting at measure 94, featuring a 'Home-made rattle' indicated by a wavy line.

WHIRLWIND

FOR CONCERT BAND

JODIE BLACKSHAW

A Soundscape

Free time. Play on cue.

Waterglass chime
let ring

B Solo with whirlies

Like a whirlwind: slowly — getting faster — then slowly again

mp smooth and gentle

C Soundscape

Play melody on cue and hold last note

mf clingingly

D

Andante con moto (♩ = 96) 18

E Two-part round

2 Group 3

mp

F Percussion solo

2 12

f

G Four-part round

2 Group 3

f

f *mf*

mp

H Solo with echo

Like a whirlwind

I Soundscape

Free time. Play on cue.

Waterglass chime
let ring

mp

WHIRLWIND

FOR CONCERT BAND

JODIE BLACKSHAW

A Soundscape

Free time. Play on cue.

B Solo with whirllies

Like a whirlwind: slowly — getting faster — then slowly again

Waterglass chime let ring 2

mp smooth and gentle

C Soundscape

Play melody on cue and hold last note

(2)

mf clingingly

D

Andante con moto (♩ = 96)

18

E Two-part round

Group 3

mp

28

36

F Percussion solo 12

G Four-part round

Group 3

56

f

66

74

f *mf*

82

mp

H Solo with echo

Like a whirlwind

I Soundscape

Free time. Play on cue.

Waterglass chime let ring

91

93 94

WHIRLWIND

FOR CONCERT BAND

JODIE BLACKSHAW

A Soundscape
Free time. Play on cue.
Home-made rattle

B Solo with whirlies
Like a whirlwind:
slowly — getting faster — then slowly again

Musical notation for section A and B. Section A is a soundscape with a home-made rattle. Section B is a solo with whirlies, marked *mp* smooth and gentle. The notation includes a treble clef, a key signature of two sharps (F# and C#), and a common time signature. Section A consists of a series of wavy lines representing a rattle. Section B begins with a measure marked '2' and contains a melodic line with a slur and a fermata over the final note.

Musical notation for the continuation of section B. It shows a melodic line with a slur and a fermata over the final note. The notation includes a treble clef, a key signature of two sharps, and a common time signature.

C Soundscape
Play melody on cue and hold last note

Musical notation for section C. It shows a melodic line with a slur and a fermata over the final note, marked *mf* clingingly. The notation includes a treble clef, a key signature of two sharps, and a common time signature.

D
Andante con moto (♩ = 96)

E Two-part round
20

F Percussion solo
12

Musical notation for sections D, E, and F. Section D is marked *Andante con moto* (♩ = 96). Section E is a two-part round of 20 measures. Section F is a percussion solo of 12 measures. The notation includes a treble clef, a key signature of two sharps, and a 3/4 time signature.

G Four-part round
3 Group 4

Musical notation for section G. It shows a four-part round for Group 4, consisting of 3 measures. The notation includes a treble clef, a key signature of two sharps, and a 3/4 time signature.

Musical notation for the continuation of section G. It shows a melodic line with a slur and a fermata over the final note. The notation includes a treble clef, a key signature of two sharps, and a 3/4 time signature.

Musical notation for the continuation of section G. It shows a melodic line with a slur and a fermata over the final note, marked *f*. The notation includes a treble clef, a key signature of two sharps, and a 3/4 time signature.

Musical notation for the continuation of section G. It shows a melodic line with a slur and a fermata over the final note, marked *mf* and *mp*. The notation includes a treble clef, a key signature of two sharps, and a 3/4 time signature.

Musical notation for the continuation of section G. It shows a melodic line with a slur and a fermata over the final note. The notation includes a treble clef, a key signature of two sharps, and a 3/4 time signature.

H Solo with echo
Like a whirlwind

I Soundscape
Free time. Play on cue.
Home-made rattle

Musical notation for sections H and I. Section H is a solo with echo, marked '2'. Section I is a soundscape with a home-made rattle, marked '93' and '94'. The notation includes a treble clef, a key signature of two sharps, and a common time signature.

WHIRLWIND

FOR CONCERT BAND

JODIE BLACKSHAW

A Soundscape

Free time. Play on cue.

Waterglass chime
let ring

B Solo with whirlies

Like a whirlwind: slowly — getting faster — then slowly again

mp smooth and gentle

C Soundscape

Play melody on cue and hold last note

mf clingingly

D

Andante con moto (♩ = 96)

18

E Two-part round

Group 1

mf

F Percussion solo

12

G Four-part round

Group 1

f

mp

H Solo with echo

88 Solo Tpt.; do not play this tied note,
insert mute and prepare for solo

Like a whirlwind: slowly — getting faster — then slowly again

93 Solo, straight mute

mp
echo Solo Clar. and match its Tempo changes

I Soundscape

Free time. Play on cue.

Waterglass chime
let ring

WHIRLWIND

FOR CONCERT BAND

A Soundscape

Free time. Play on cue. **B** Solo with whirlies

Waterglass chime
let ring 2

Like a whirlwind: slowly — getting faster — then slowly again

mp smooth and gentle

C Soundscape

Play melody on cue and hold last note

D

Andante con moto (♩ = 96)

18

mf clingingly

E Two-part round

2 Group 3

mp

F Percussion solo **G** Four-part round

12

2

Group 3

f

f *mf*

mp

H Solo with echo

I Soundscape

Like a whirlwind

Free time. Waterglass chime

Play on cue.

let ring

mp

WHIRLWIND

FOR CONCERT BAND

Trombone

JODIE BLACKSHAW

A Soundscape

Free time. Play on cue.
Home-made rattle

B Solo with whirlies

Like a whirlwind: slowly — getting faster — then slowly again

Musical notation for sections A and B. Section A is a free-time soundscape with a home-made rattle. Section B is a solo with whirlies, starting at measure 2, marked *mp* smooth and gentle. The notation includes a bass clef, a treble clef, and various musical symbols like notes, rests, and dynamics.

Musical notation for the continuation of section B, starting at measure (2). It features a bass clef and a treble clef with notes and rests.

C Soundscape

Play melody on cue and hold last note

D

Andante con moto (♩ = 96) 18

Musical notation for sections C and D. Section C starts at measure 3, marked *mf* clingly. Section D starts at measure 18, marked Andante con moto (♩ = 96). The notation includes a bass clef and a treble clef with notes and rests.

E Two-part round

24 2 Group 3

Musical notation for section E, a two-part round starting at measure 24. It is marked *mp* and includes a bass clef and a treble clef with notes and rests.

Musical notation for the continuation of section E, starting at measure 34. It includes a bass clef and a treble clef with notes and rests.

F Percussion solo **G** Four-part round

44 12 2 Group 3

Musical notation for sections F and G. Section F is a percussion solo starting at measure 44. Section G is a four-part round starting at measure 56, marked *f*. The notation includes a bass clef and a treble clef with notes and rests.

Musical notation for the continuation of section G, starting at measure 64. It includes a bass clef and a treble clef with notes and rests.

Musical notation for the continuation of section G, starting at measure 72. It includes a bass clef and a treble clef with notes and rests.

Musical notation for the continuation of section G, starting at measure 80. It includes a bass clef and a treble clef with notes and rests.

H Solo with echo

Like a whirlwind

I Soundscape

Free time. Play on cue.

Musical notation for sections H and I. Section H is a solo with echo starting at measure 88, marked *f*. Section I is a soundscape starting at measure 94, marked Home-made rattle. The notation includes a bass clef and a treble clef with notes and rests.

WHIRLWIND

FOR CONCERT BAND

A Soundscape

Free time. Play on cue.
Home-made rattle

B Solo with whirlies

Like a whirlwind: slowly — getting faster — then slowly again

C Soundscape

Play melody on cue and hold last note

D

Andante con moto (♩ = 96) 18

E Two-part round

24 2 Group 3

F Percussion solo

44 12

G Four-part round

2 Group 3

H Solo with echo

Like a whirlwind

I Soundscape

Free time. Play on cue.

WHIRLWIND

FOR CONCERT BAND

A Soundscape
Free time. Play on cue.
Home-made rattle

B Solo with whirlies
Like a whirlwind: slowly — getting faster — then slowly again,

mp smooth and gentle

C Soundscape
Play melody on cue and hold last note

D Andante con moto (♩ = 96) 18

E Two-part round
2 Group 3

F Percussion solo **G** Four-part round
12 2 Group 3

H Solo with echo **I** Soundscape
Like a whirlwind Free time. Play on cue.
Home-made rattle

Tuba

WHIRLWIND

FOR CONCERT BAND

JODIE BLACKSHAW

A Soundscape
Free time. Play on cue.
Home-made rattle

B Solo with whirlies
Like a whirlwind: slowly — getting faster — then slowly again

Musical notation for sections A and B. Section A (measures 1-2) features a 'Home-made rattle' sound effect. Section B (measures 2-9) is a solo with whirlies, starting with a *mp* dynamic and a 'smooth and gentle' instruction. The notation includes a bass clef, a common time signature, and various note values with slurs and dynamic markings.

Musical notation for the continuation of section B, measures 10-18. It continues the whirly melody with slurs and dynamic markings.

C Soundscape
Play melody on cue and hold last note

D Andante con moto (♩ = 96)

Musical notation for sections C and D. Section C (measures 19-20) is a soundscape where the melody is played and held. Section D (measures 21-24) is in 3/4 time with an *Andante con moto* tempo of 96 beats per minute. Dynamics include *mf* and *clingingly*.

Musical notation for section E, measures 25-36. It is a two-part round consisting of two measures of rest, each marked with a measure number (18 and 20).

F Percussion solo
12

G Four-part round
3 Group 4

Musical notation for sections F and G. Section F (measures 37-48) is a percussion solo. Section G (measures 49-51) is a four-part round for Group 4, starting with a *f* dynamic.

Musical notation for the continuation of section G, measures 52-62. It features a *f* dynamic and a crescendo leading to a *f* dynamic.

Musical notation for the continuation of section G, measures 63-76. It features a *f* dynamic and a crescendo leading to a *f* dynamic.

Musical notation for the continuation of section G, measures 77-84. It features a *mf* dynamic and a crescendo leading to a *mp* dynamic.

Musical notation for the continuation of section G, measures 85-92. It features a *mp* dynamic and a crescendo leading to a *mp* dynamic.

H Solo with echo
Like a whirlwind

I Soundscape
Free time. Play on cue.
Home-made rattle

Musical notation for sections H and I. Section H (measures 93-94) is a solo with echo. Section I (measures 95-96) is a soundscape with a 'Home-made rattle' sound effect.

WHIRLWIND

FOR CONCERT BAND

A Soundscape

Free time. Play on cue.
Waterglass chime
let ring

B Solo with whirlies

Like a whirlwind: slowly — getting faster — then slowly again

mp smooth and gentle

C Soundscape

Play melody on cue and hold last note

mf clingingly

D

Andante con moto (♩ = 96)

E Two-part round

F Percussion solo

12

G Four-part round

3 Group 4

f

f

mf mp

H Solo with echo

Like a whirlwind

93

I Soundscape

Free time. Play on cue.

94

Waterglass chime
let ring

WHIRLWIND

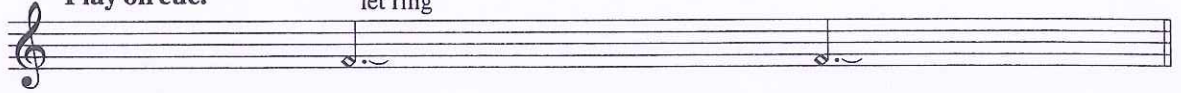
FOR CONCERT BAND

JODIE BLACKSHAW

A Soundscape

Free time.
Play on cue.

Waterglass chime
let ring



B Solo with whirlies

Like a whirlwind: slowly — getting faster — then slowly again

2



mp smooth and gentle

(2)



C Soundscape

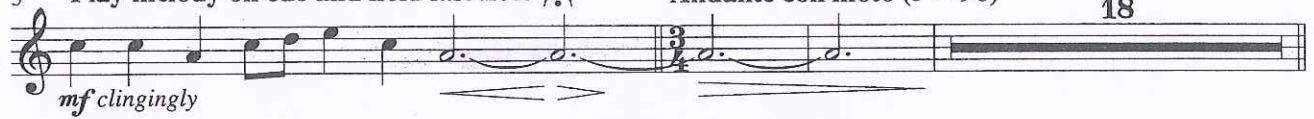
3 Play melody on cue and hold last note

D

Andante con moto (♩ = 96)

18

3



mf clingingly

E Two-part round

20

F Percussion solo

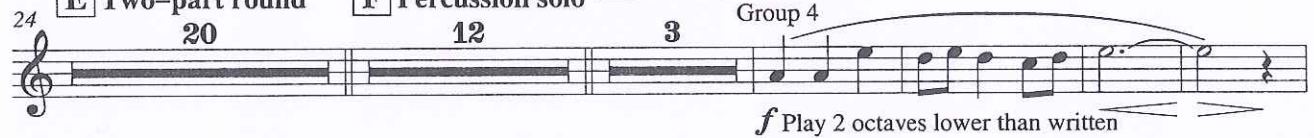
12

G Four-part round

Group 4

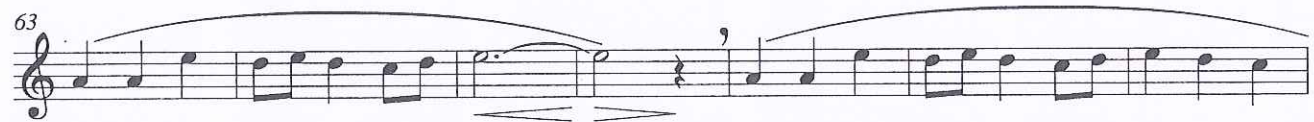
3

24



f Play 2 octaves lower than written

63



70



f

77



mf *mp*

84



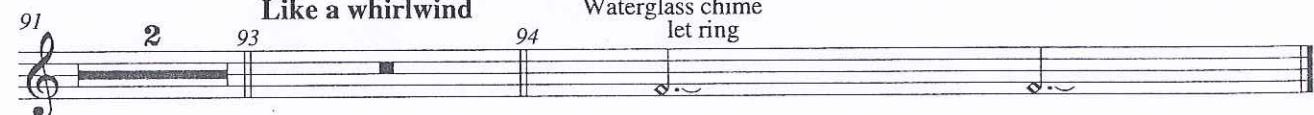
H Solo with echo
Like a whirlwind

I Soundscape

Free time. Play on cue.

Waterglass chime
let ring

91



2 93 94

WHIRLWIND

FOR CONCERT BAND

Drone

JODIE BLACKSHAW

A Soundscape

Free time. Play on cue.

Home-made rattle

B Solo with whirlies

Like a whirlwind

C Soundscape

Play melody on cue and hold last note

on cue

D

4 Andante con moto (♩ = 96)

E Two-part round

F Percussion solo

12

G Four-part round

3 Group 4

H Solo with echo

Like a whirlwind

I Soundscape

Free time. Play on cue.

Home-made rattle

WHIRLWIND

FOR CONCERT BAND

A Soundscape

Free time. Play on cue.

B Solo with whirlies

Like a whirlwind: slowly — getting faster — then slowly again

mp smooth and gentle

C Soundscape

Play melody on cue and hold last note

let ring 3

D Andante con moto (♩ = 96)

brass or hard plastic mallets

let ring let ring always let ring

f

E Two-part round

F Percussion solo

let ring

always let ring

mf *f* *f*

G Four-part round

f

mf *mp*

H Solo with echo

Like a whirlwind

I Soundscape

Free time. Play on cue.

90 93 94

Snare Drum

WHIRLWIND

FOR CONCERT BAND

JODIE BLACKSHAW

PERFORMANCE NOTE TO CONDUCTOR AND PERFORMER: Make sure you allocate sufficient space between each Whirly player and the rest of the band so that Whirlies can be spun without contacting objects or persons. Spin Whirly vertically, beside you, (like a lasso) or horizontally above you (like a helicopter rotor). Band members construct their Whirlies from 2-inch to 2½-inch diameter plastic corrugated hose (see preface).

A Soundscape
Free time. Play on cue.
Whirly

B Solo with whirlies
Like a whirlwind:
slowly — getting faster — then slowly again

C Soundscape
Play melody on cue and hold last note
3 to Snare Drum

D Andante con moto (♩ = 96)
med. hard yarn mallets
12 Snares off L R L R L R L R L R

18 L R L R L R L R L R (continue sticking pattern)

E Two-part round

F Percussion solo

G Four-part round

80 creep in

H Solo with echo
Like a whirlwind

I Soundscape
Free time. Play on cue.

Medium Tom

WHIRLWIND

FOR CONCERT BAND

JODIE BLACKSHAW

PERFORMANCE NOTE TO CONDUCTOR AND PERFORMER: Make sure you allocate sufficient space between each Whirly player and the rest of the band so that Whirlies can be spun without contacting objects or persons. Spin Whirly vertically, beside you, (like a lasso) or horizontally above you (like a helicopter rotor). Band members construct their Whirlies from 2-inch to 2½-inch diameter plastic corrugated hose (see preface).

A Soundscape
Free time. Play on cue.

B Solo with whirlies
Like a whirlwind
slowly — getting faster — then slowly again

Whirly

mf

2

C Soundscape
Play melody on cue and hold last note

to Medium Tom

D Andante con moto (♩ = 96)
20

E Two-part round
20

F Percussion solo
5

49

L R L R L L R

f

53

L R L R L L R

L R L R L R L R L R L R

G Four-part round

56

let ring

23

creep in

f

n *mp*

83

H Solo with echo
Like a whirlwind

I Soundscape
Free time. Play on cue.

n

WHIRLWIND

FOR CONCERT BAND

PERFORMANCE NOTE TO CONDUCTOR AND PERFORMER: Make sure you allocate sufficient space between each Whirly player and the rest of the band so that Whirlies can be spun without contacting objects or persons. Spin Whirly vertically, beside you, (like a lasso) or horizontally above you (like a helicopter rotor). Band members construct their Whirlies from 2-inch to 2½-inch diameter plastic corrugated hose (see preface).

A Soundscape
Free time. Play on cue.
Whirly

B Solo with whirlies
Like a whirlwind:
slowly —
getting faster —
then slowly again

C Soundscape
Play melody on cue and hold last note
to Bass Drum

D
Andante con moto (♩ = 96)

4 2 soft mallets

14

E Two-part round

24

33

F Percussion solo

41

G Four-part round

52 Centre of drum L R L R L L R Centre of drum L R L R L R L R L R let ring 32

H Solo with echo

89 93 Like a whirlwind

I Soundscape

(93) 94 Free time. Play on cue. let ring

Suspended Cymbal

WHIRLWIND

FOR CONCERT BAND

JODIE BLACKSHAW

PERFORMANCE NOTE TO CONDUCTOR AND PERFORMER: Make sure you allocate sufficient space between each Whirly player and the rest of the band so that Whirlies can be spun without contacting objects or persons. Spin Whirly vertically, beside you, (like a lasso) or horizontally above you (like a helicopter rotor). Band members construct their Whirlies from 2-inch to 2½-inch diameter plastic corrugated hose (see preface).

A Soundscape
Free time. Play on cue.

Whirly

f

B Solo with whirlies
Like a whirlwind:
slowly — getting faster — then slowly again

C Soundscape
Play melody on cue and hold last note
to Suspended Cymbal

mf

D Andante con moto (♩ = 96)
Scrape a coin from crown to edge of cymbal in one motion
always let ring

mf

E Two-part round

F Percussion solo

Hit crown with butt end of sticks

44 LRLRLR LRLRLR 4 LRLR

f

G Four-part round

56 let ring 29 Roll on outer edge of cymbal with mallets opposite each other

f *mp*

H Solo with echo

93 Like a whirlwind (dim. when Tpt. enters)
let ring to Whirly creep in

mp

I Soundscape

94 Free time. Play on cue.

n

Timpani

WHIRLWIND

FOR CONCERT BAND

JODIE BLACKSHAW

A Soundscape

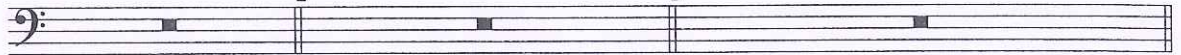
Free time. Play on cue.

B Solo with whirlies

Like a whirlwind

C Soundscape

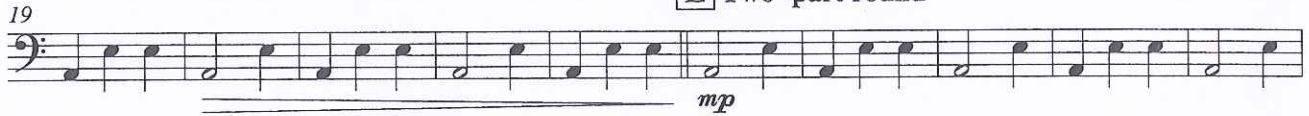
Play melody on cue and hold last note



D Andante con moto (♩ = 96)



E Two-part round



F Percussion solo



G Four-part round



59 L R R (continue sticking pattern)



H Solo with echo
Like a whirlwind

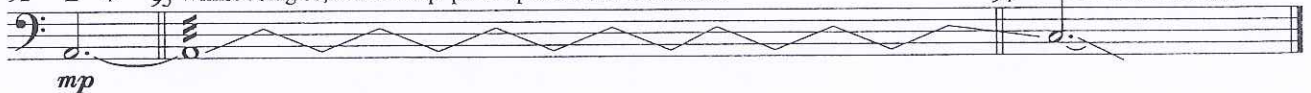
Place mallets either side of cymbal and roll on cymbal.

92 L * 93 Whilst doing so, move Timp. pedal up and down as notated.

I Soundscape

Free time. Play on cue.

94 End roll. Let ring.



*Place suspended or ride cymbal upside down in centre of largest timpani